

Glass Separation for Biomedical Devices

with the DTX StreetSmart Breaker

Precision Glass Separation

- The Biomedical industry is adopting semiconductor-like practices to gain scalability, quality control, and repeatability of device performance
- Die separation of a pre-scribed glass panel is **quick, clean** and **repeatable**
- Scalable process for ramping up production while maintaining die quality
- After precise laser pre-scribing of the glass panel, resulting die edges are smooth, straight, and chip-free

Dynatex has decades of experience in separation of die and devices made from various substrates (III-V materials, Si, SiC, Ceramic)



StreetSmart Glass Breaking Applications:

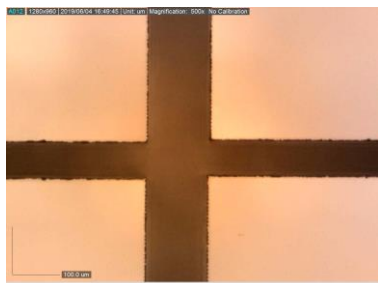
Borosilicate glass

Fused silica

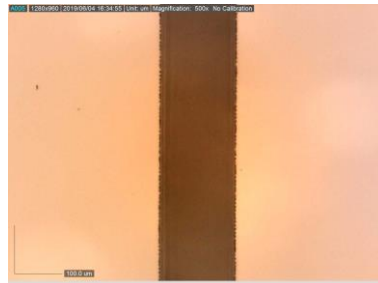
Single & stacked glass

Glass Die After Separation:

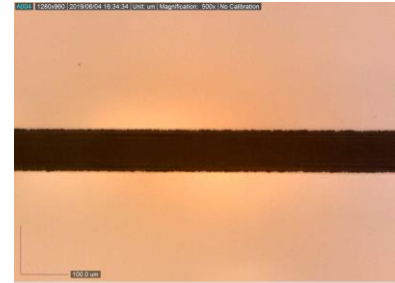
Image Results of Schott Borofloat 33 (Nexterion® PreScora)



Separation at intersection



Separation axis 1



Separation axis 2

Although the information and recommendations set forth herein are presented in good faith and believed to be correct, Dynatex International makes no representations as to their completeness or accuracy. Information is supplied upon the condition that the persons receiving will make their own verification and determination as to its suitability for their purposes prior to use. In no event will Dynatex International be responsible for damages of any nature whatsoever resulting from the use of or reliance upon this information. NO REPRESENTATION OR WARRANTIES, EITHER EXPRESSED OR IMPLIED, OF MERCHANTABILITY, FITNESS FOR A PARTICULAR PURPOSE OR ANY OTHER NATURE ARE MADE HEREUNDER WITH RESPECT TO INFORMATION OR PRODUCT TO WHICH INFORMATION REFERS.



Benefits of StreetSmart Glass Separation:

- For high volume production, maintain in-house control of glass device processing:
 - The **DTX StreetSmart Breaker** processes coated and non-coated glass
 - Separate glass panels before **OR** after applying a sensitive coating
 - No contact at the sensitive or active area of devices
 - Consistent, repeatable process yields high volume production as demand increases
- For use in R&D **AND** pilot production of glass based biomedical devices:
 - No more hand breaking of glass yields smooth, straight edges for more consistent results, reducing staff time to drive decreased production cost and increased efficiency
 - The separation process is highly scalable, allowing seamless switching between large-scale production and R&D

System Specifications: **DTX StreetSmart Breaker**

Power Required	100/120 VAC 20 amp OR 220/240 VAC 10 amp, 50/60Hz
Operating Temperature	60 - 80° F (15 - 27° C), 40 – 60% relative humidity
Height	78 in (1981.2 mm)
Width	57 in (1477.8 mm)
Depth	50 in (1270 mm)
Chuck/Capacity:	Up to 200 mm square or round glass
Break Time:	~ 0.750 to 1.5 seconds per/break

For more information, please contact:

Email: sales@dynatex.com

Ph: 707-542-4227